

Levelling sets

Steel / Stainless Steel, with spherical washer, with locknut

SPECIFICATION

Version in Steel

Steel, 1.7225 (42 CrMo 4V) ST
zinc plated, blue passivated

Version in Stainless Steel

Stainless Steel AISI 303
(X 10 CrNiS 18-9) NI

F1: max. total load

F2: max. load after deduction of the max. preload

- for screws $8.8 \mu = 0.125$ (Steel version)
- for screws $6.8 \mu = 0.14$ (Stainless Steel version)



INFORMATION

Levelling sets GN 350.5 are used for levelling, adjusting and linking operations. The spherical washer allows precise installation of two non parallel planes at a required gradient up to $\approx 4^\circ$.

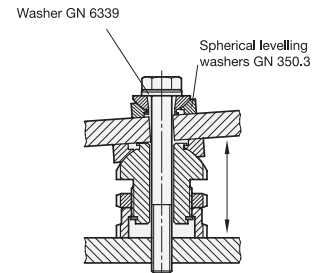
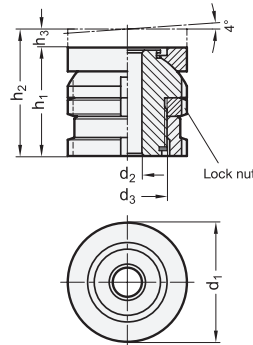
They comprise a threaded upper sleeve and a female threaded lower sleeve. The fine thread allows a stepless and precise setting and locking using the C-Spanner DIN 1810 (see page 994). A locking ring serves also as a height limiter for the max. height.

TECHNICAL INFORMATION

- Stainless Steel characteristics (see page A26)

ACCESSORY

- C-Spanner DIN 1810 (code no. see table)



GN 350.5

| Description | d1 | d2 | h1 | d3 | h2 | h3 | For screw | Static load F in kN F1 | Static load F in kN F2 | Code no. for C-Spanner | ⚖️ |
|------------------------|----|------|----|------------|-----|----|-----------|------------------------|------------------------|------------------------|------|
| GN 350.5-25-6,6-27-ST | 25 | 6.6 | 27 | M 15 x 1 | 31 | 4 | M 6 | 40 | 30.7 | DIN 1810-A25-28 | 80 |
| GN 350.5-25-6,6-40-ST | 25 | 6.6 | 40 | M 15 x 1 | 50 | 10 | M 6 | 40 | 30.7 | DIN 1810-A25-28 | 85 |
| GN 350.5-32-6,6-32-ST | 32 | 6.6 | 32 | M 20 x 1 | 37 | 5 | M 6 | 65 | 55.7 | DIN 1810-A30-32 | 140 |
| GN 350.5-32-6,6-49-ST | 32 | 6.6 | 49 | M 20 x 1 | 63 | 14 | M 6 | 65 | 55.7 | DIN 1810-A30-32 | 147 |
| GN 350.5-32-9-32-ST | 32 | 9 | 32 | M 20 x 1 | 37 | 5 | M 8 | 65 | 48 | DIN 1810-A30-32 | 130 |
| GN 350.5-32-9-49-ST | 32 | 9 | 49 | M 20 x 1 | 63 | 14 | M 8 | 65 | 48 | DIN 1810-A30-32 | 147 |
| GN 350.5-32-11-32-ST | 32 | 11 | 32 | M 20 x 1 | 37 | 5 | M 10 | 65 | 37.9 | DIN 1810-A30-32 | 120 |
| GN 350.5-32-11-49-ST | 32 | 11 | 49 | M 20 x 1 | 63 | 14 | M 10 | 65 | 37.9 | DIN 1810-A30-32 | 200 |
| GN 350.5-45-11-41-ST | 45 | 11 | 41 | M 30 x 1.5 | 48 | 7 | M 10 | 120 | 92.9 | DIN 1810-A45-50 | 360 |
| GN 350.5-45-11-61-ST | 45 | 11 | 61 | M 30 x 1.5 | 79 | 18 | M 10 | 120 | 92.9 | DIN 1810-A45-50 | 399 |
| GN 350.5-45-13,5-41-ST | 45 | 13.5 | 41 | M 30 x 1.5 | 48 | 7 | M 12 | 120 | 80.4 | DIN 1810-A45-50 | 350 |
| GN 350.5-45-13,5-61-ST | 45 | 13.5 | 61 | M 30 x 1.5 | 79 | 18 | M 12 | 120 | 80.4 | DIN 1810-A45-50 | 390 |
| GN 350.5-45-17,5-41-ST | 45 | 17.5 | 41 | M 30 x 1.5 | 48 | 7 | M 16 | 120 | 45.5 | DIN 1810-A45-50 | 400 |
| GN 350.5-45-17,5-61-ST | 45 | 17.5 | 61 | M 30 x 1.5 | 79 | 18 | M 16 | 120 | 45.5 | DIN 1810-A45-50 | 480 |
| GN 350.5-58-17,5-53-ST | 58 | 17.5 | 53 | M 40 x 1.5 | 62 | 9 | M 16 | 210 | 136 | DIN 1810-A58-62 | 940 |
| GN 350.5-58-17,5-79-ST | 58 | 17.5 | 79 | M 40 x 1.5 | 102 | 23 | M 16 | 210 | 136 | DIN 1810-A58-62 | 1189 |

GN 350.5

| Description | d1 | d2 | h1 | d3 | h2 | h3 | For screw | Static load F in kN F1 | Static load F in kN F2 | Code no. for C-Spanner | ⚖️ |
|-----------------------|----|----|-----|------------|-----|----|-----------|------------------------|------------------------|------------------------|------|
| GN 350.5-58-22-53-ST | 58 | 22 | 53 | M 40 x 1.5 | 62 | 9 | M 20 | 210 | 90 | DIN 1810-A58-62 | 770 |
| GN 350.5-58-22-79-ST | 58 | 22 | 79 | M 40 x 1.5 | 102 | 23 | M 20 | 210 | 90 | DIN 1810-A58-62 | 840 |
| GN 350.5-58-26-53-ST | 58 | 26 | 53 | M 40 x 1.5 | 62 | 9 | M 24 | 210 | 37 | DIN 1810-A58-62 | 760 |
| GN 350.5-58-26-79-ST | 58 | 26 | 79 | M 40 x 1.5 | 102 | 23 | M 24 | 210 | 37 | DIN 1810-A58-62 | 830 |
| GN 350.5-70-22-61-ST | 70 | 22 | 61 | M 50 x 1.5 | 71 | 10 | M 20 | 330 | 210 | DIN 1810-A68-75 | 1600 |
| GN 350.5-70-22-94-ST | 70 | 22 | 94 | M 50 x 1.5 | 123 | 29 | M 20 | 330 | 210 | DIN 1810-A68-75 | 1900 |
| GN 350.5-70-26-61-ST | 70 | 26 | 61 | M 50 x 1.5 | 71 | 10 | M 24 | 330 | 157 | DIN 1810-A68-75 | 1200 |
| GN 350.5-70-26-94-ST | 70 | 26 | 94 | M 50 x 1.5 | 123 | 29 | M 24 | 330 | 157 | DIN 1810-A68-75 | 1300 |
| GN 350.5-70-33-61-ST | 70 | 33 | 61 | M 50 x 1.5 | 71 | 10 | M 30 | 330 | 53 | DIN 1810-A68-75 | 1100 |
| GN 350.5-70-33-94-ST | 70 | 33 | 94 | M 50 x 1.5 | 123 | 29 | M 30 | 330 | 53 | DIN 1810-A68-75 | 1200 |
| GN 350.5-80-26-67-ST | 80 | 26 | 67 | M 60 x 2 | 79 | 12 | M 24 | 495 | 322 | DIN 1810-A80-90 | 1650 |
| GN 350.5-80-26-105-ST | 80 | 26 | 105 | M 60 x 2 | 144 | 39 | M 24 | 495 | 322 | DIN 1810-A80-90 | 2100 |
| GN 350.5-80-33-67-ST | 80 | 33 | 67 | M 60 x 2 | 79 | 12 | M 30 | 495 | 218 | DIN 1810-A80-90 | 1550 |
| GN 350.5-80-33-105-ST | 80 | 33 | 105 | M 60 x 2 | 144 | 39 | M 30 | 495 | 218 | DIN 1810-A80-90 | 1911 |
| GN 350.5-80-39-67-ST | 80 | 39 | 67 | M 60 x 2 | 79 | 12 | M 36 | 495 | 101 | DIN 1810-A80-90 | 1450 |
| GN 350.5-80-39-105-ST | 80 | 39 | 105 | M 60 x 2 | 144 | 39 | M 36 | 495 | 101 | DIN 1810-A80-90 | 1950 |

GN 350.5-NI

STAINLESS STEEL

| Description | d1 | d2 | h1 | d3 | h2 | h3 | For screw | Static load F in kN F1 | Static load F in kN F2 | Code no. for C-Spanner | ⚖️ |
|------------------------|----|------|-----|------------|-----|----|-----------|------------------------|------------------------|------------------------|------|
| GN 350.5-25-6.6-27-NI | 25 | 6.6 | 27 | M 15 x 1 | 31 | 4 | M 6 | 27.1 | 20.26 | DIN 1810-A25-28 | 80 |
| GN 350.5-25-6.6-40-NI | 25 | 6.6 | 40 | M 15 x 1 | 50 | 10 | M 6 | 27.1 | 20.26 | DIN 1810-A25-28 | 85 |
| GN 350.5-32-6.6-32-NI | 32 | 6.6 | 32 | M 20 x 1 | 37 | 5 | M 6 | 43.4 | 36.56 | DIN 1810-A30-32 | 140 |
| GN 350.5-32-6.6-49-NI | 32 | 6.6 | 49 | M 20 x 1 | 63 | 14 | M 6 | 43.4 | 36.56 | DIN 1810-A30-32 | 147 |
| GN 350.5-32-9-32-NI | 32 | 9 | 32 | M 20 x 1 | 37 | 5 | M 8 | 43.4 | 30.86 | DIN 1810-A30-32 | 130 |
| GN 350.5-32-9-49-NI | 32 | 9 | 49 | M 20 x 1 | 63 | 14 | M 8 | 43.4 | 30.86 | DIN 1810-A30-32 | 147 |
| GN 350.5-32-11-32-NI | 32 | 11 | 32 | M 20 x 1 | 37 | 5 | M 10 | 43.4 | 23.41 | DIN 1810-A30-32 | 120 |
| GN 350.5-32-11-49-NI | 32 | 11 | 49 | M 20 x 1 | 63 | 14 | M 10 | 43.4 | 23.41 | DIN 1810-A30-32 | 127 |
| GN 350.5-45-11-41-NI | 45 | 11 | 41 | M 30 x 1.5 | 48 | 7 | M 10 | 84 | 64.01 | DIN 1810-A45-50 | 360 |
| GN 350.5-45-11-61-NI | 45 | 11 | 61 | M 30 x 1.5 | 79 | 18 | M 10 | 84 | 64.01 | DIN 1810-A45-50 | 370 |
| GN 350.5-45-13.5-41-NI | 45 | 13.5 | 41 | M 30 x 1.5 | 48 | 7 | M 12 | 84 | 54.82 | DIN 1810-A45-50 | 350 |
| GN 350.5-45-13.5-61-NI | 45 | 13.5 | 61 | M 30 x 1.5 | 79 | 18 | M 12 | 84 | 54.82 | DIN 1810-A45-50 | 390 |
| GN 350.5-45-17.5-41-NI | 45 | 17.5 | 41 | M 30 x 1.5 | 48 | 7 | M 16 | 84 | 28.9 | DIN 1810-A45-50 | 340 |
| GN 350.5-45-17.5-61-NI | 45 | 17.5 | 61 | M 30 x 1.5 | 79 | 18 | M 16 | 84 | 28.9 | DIN 1810-A45-50 | 380 |
| GN 350.5-58-17.5-53-NI | 58 | 17.5 | 53 | M 40 x 1.5 | 62 | 9 | M 16 | 148 | 92.9 | DIN 1810-A58-62 | 780 |
| GN 350.5-58-17.5-79-NI | 58 | 17.5 | 79 | M 40 x 1.5 | 102 | 23 | M 16 | 148 | 92.9 | DIN 1810-A58-62 | 1184 |
| GN 350.5-58-22-53-NI | 58 | 22 | 53 | M 40 x 1.5 | 62 | 9 | M 20 | 148 | 59.08 | DIN 1810-A58-62 | 770 |
| GN 350.5-58-22-79-NI | 58 | 22 | 79 | M 40 x 1.5 | 102 | 23 | M 20 | 148 | 59.08 | DIN 1810-A58-62 | 840 |
| GN 350.5-58-26-53-NI | 58 | 26 | 53 | M 40 x 1.5 | 62 | 9 | M 24 | 148 | 20.3 | DIN 1810-A58-62 | 760 |
| GN 350.5-58-26-79-NI | 58 | 26 | 79 | M 40 x 1.5 | 102 | 23 | M 24 | 148 | 20.3 | DIN 1810-A58-62 | 860 |
| GN 350.5-70-22-61-NI | 70 | 22 | 61 | M 50 x 1.5 | 71 | 10 | M 20 | 225 | 136.08 | DIN 1810-A68-75 | 1300 |
| GN 350.5-70-22-94-NI | 70 | 22 | 94 | M 50 x 1.5 | 123 | 29 | M 20 | 225 | 136.08 | DIN 1810-A68-75 | 1418 |
| GN 350.5-70-26-61-NI | 70 | 26 | 61 | M 50 x 1.5 | 71 | 10 | M 24 | 225 | 97.3 | DIN 1810-A68-75 | 1200 |
| GN 350.5-70-26-94-NI | 70 | 26 | 94 | M 50 x 1.5 | 123 | 29 | M 24 | 225 | 97.3 | DIN 1810-A68-75 | 1400 |
| GN 350.5-70-33-61-NI | 70 | 33 | 61 | M 50 x 1.5 | 71 | 10 | M 30 | 225 | 20.6 | DIN 1810-A68-75 | 1100 |
| GN 350.5-70-33-94-NI | 70 | 33 | 94 | M 50 x 1.5 | 123 | 29 | M 30 | 225 | 20.6 | DIN 1810-A68-75 | 1200 |
| GN 350.5-80-26-67-NI | 80 | 26 | 67 | M 60 x 2 | 79 | 12 | M 24 | 323 | 195.3 | DIN 1810-A80-90 | 1650 |
| GN 350.5-80-26-105-NI | 80 | 26 | 105 | M 60 x 2 | 144 | 39 | M 24 | 323 | 195.3 | DIN 1810-A80-90 | 2900 |
| GN 350.5-80-33-67-NI | 80 | 33 | 67 | M 60 x 2 | 79 | 12 | M 30 | 323 | 118.6 | DIN 1810-A80-90 | 1550 |
| GN 350.5-80-33-105-NI | 80 | 33 | 105 | M 60 x 2 | 144 | 39 | M 30 | 323 | 118.6 | DIN 1810-A80-90 | 1911 |
| GN 350.5-80-39-67-NI | 80 | 39 | 67 | M 60 x 2 | 79 | 12 | M 36 | 323 | 38.2 | DIN 1810-A80-90 | 1450 |
| GN 350.5-80-39-105-NI | 80 | 39 | 105 | M 60 x 2 | 144 | 39 | M 36 | 323 | 38.2 | DIN 1810-A80-90 | 1811 |

